



CONCEPT³ countertop set with hand dryer, liquid soap dispenser and faucet. Satin finish

Components

- Hand dryer.
- Liquid soap dispenser.
- Faucet with laser sensor.

Description

- Countertop set of hand dryer, liquid soap dispenser and faucet with laser sensor.
- Set of anodized forged aluminum and PC (polycarbonate), silver finish.
- Also available in gloss finish (NOFER 01901.B), gold finish (NOFER 01901.GD) and black finish (NOFER 01901.N).
- Timeless design adaptable to any type of decoration.
- Robust and safe because it is built without sharp edges or other dangerous elements. - Durability and corrosion resistance. Robust and safe as it is constructed without sharp edges or other dangerous elements.
- Durability and corrosion resistance.
- Suitable for places of infrequent use such as restaurants, offices, among others.
- Top quality components.
- Conforms to European directives on electrical safety and electromagnetic compatibility (CE).

Technical characteristics

Body material: Anodized forged aluminum and PC (polycarbonate)

Finishing: Silver

Technical characteristics of hand dryer (included in control module)

Motor power: 1200 W

Electrical protection: Safety thermal limiter

Automatic shutdown for anti-vandalism: Yes - maximum cycle time 30 s.

Engine type: Universal

Hepa filter: Optional

Motor speed: 32000 rpm

Air temperature: 40°C at 10 cm

Air flow rate: 1980 l/min

Estimated drying time: 14 - 15 seconds

Soap dispenser technical characteristics (included in control module)

Dosage type: Peristaltic pump

Voltage: 5 V

Consumption: 0,3 A

Viscosity: 50 - 1500 cps

Admitted soap density: 0.8 - 1.2 kgm/dm³

Deposit material: PC transparent smoked

Soap tank capacity: 2 liters

Technical characteristics water solenoid valve (included in control module)

Maximum pressure: 8 bar

Minimum pressure: 0.5 bar

Recommended pressure: 3 bar

Electrovalve water inlet filter: Yes

Voltage: 5 V

Certifications

SGS-EC

Suggested text for prescription

NOFER countertop set with hand dryer, soap dispenser and faucet activated with electronic laser sensor and adjustable sensitivity. Made of anodized forged aluminum and PC (polycarbonate), silver finish. Independent control module with ABS plastic housing. 1200 W, 220-240 V, 50 Hz. Universal hand dryer motor speed 32000 r.p.m. NEOPERL aerator faucet with 1.89 l/min flow rate. Soap dispenser with 2-liter tank and adjustable dosage. Modern, robust, corrosion-resistant design, suitable for places of infrequent use such as restaurants, offices, among others. Top quality components...

Faucet dimensions: 225 H x 230 W x 251.5 D (mm). Control module dimensions: 307 H x 281.4 W x 210 D (mm). Manufactured by NOFER, S.L.

Technical characteristics dispenser/tap

Box dimensions: 300x480x340 mm

Box weight: 2.6 Kg

Dimensions height model faucet (assembled): 317,5x230x251,5 mm

Dimensions tap model low (assembled): 225x230x251,5 mm

Height model faucet weight: 2.5 kg

Weight tap model low: 2.3 kg

Assembly: On countertop

Hole required for countertop: Ø35 mm

Column: Extruded 6063 T5 aluminum, 5 mm medium thickness

Base hoop: Medium thickness 3 mm height gloss PC plastic

Cover ring: 2.5 mm medium thickness 6063 forged T5 aluminum, 2.5 mm thick

Water pipe: EPDM (Food Grade) Coated with stainless steel mesh

Connections: Brass CW508L (EN 1652) Chrome plated

01901.B: Chrome plating according to EN248

01901.S: Shot Blasting and Natural Anodizing 18 Micron (ISO 15184 / ISO 9227 / ISO 1134)

01901.N: Shotblasting and Black Anodizing 20 microns (ISO 15184 / ISO 9227 / ISO 1134)

01901.GD: Shot peening and Anodizing Gold 20 microns (ISO 15184 / ISO 9227 / ISO 1134)

Activation: By laser sensors with adjustable sensitivity

Sensitivity sensors: from 5 to 23 cm (pre-regulation 8 cm)

Water consumption (with slim aereator spray): 1,89 l/min (3 Bar) - alternative included 5 l/min (3 Bar)

Aerator: Neoparl

Sound level at 2 meters: 65 dBA

Technical characteristics of the control module

Box dimensions: 400x350x290 mm

Box weight: 4 kg

Control module dimensions: 307x281,4x210 mm

Control module weight (without soap): 3.8 kg

Assembly: Wall or floor mounting using 'silentblocks' (height increase + 50 mm)

Program checking: Sensor check

Soap circuit purge button: Including

Amount of soap: From 0 to 3 s. with intervals of 0.1 s.

Maximum hand dryer operation time: From 0 to 30 s. with intervals of 1 s.

Maximum solenoid valve opening time: From 0 to 30 s. with intervals of 1 s.

Water temperature: Through mixer

Hygienic activation soap and water: Including

Housing material: ABS average thickness 3 mm

Hand dryer nozzle: ABS average thickness 3 mm

Nominal consumption: 5,3 A

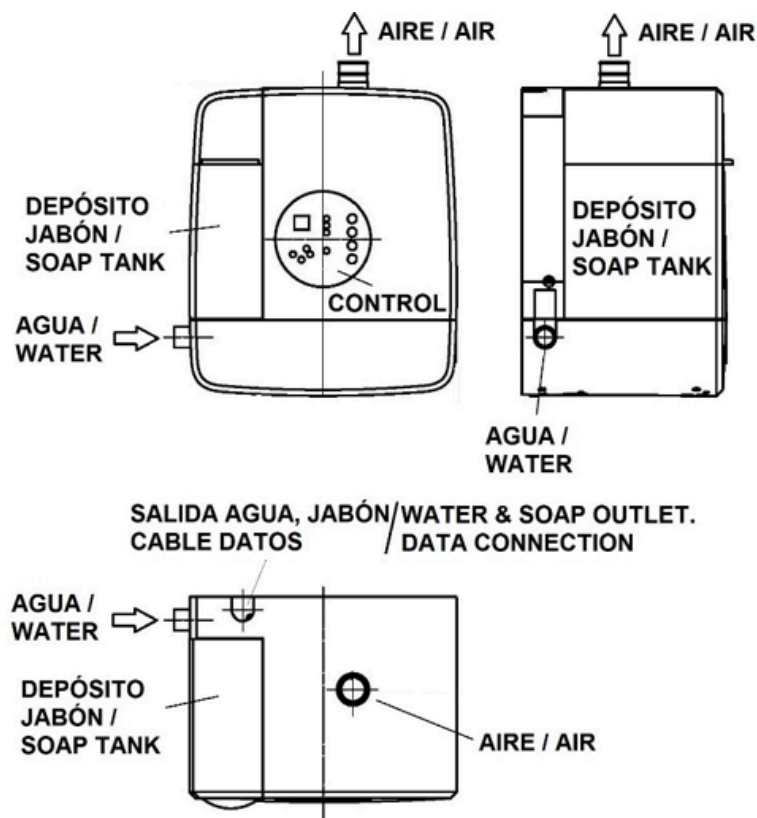
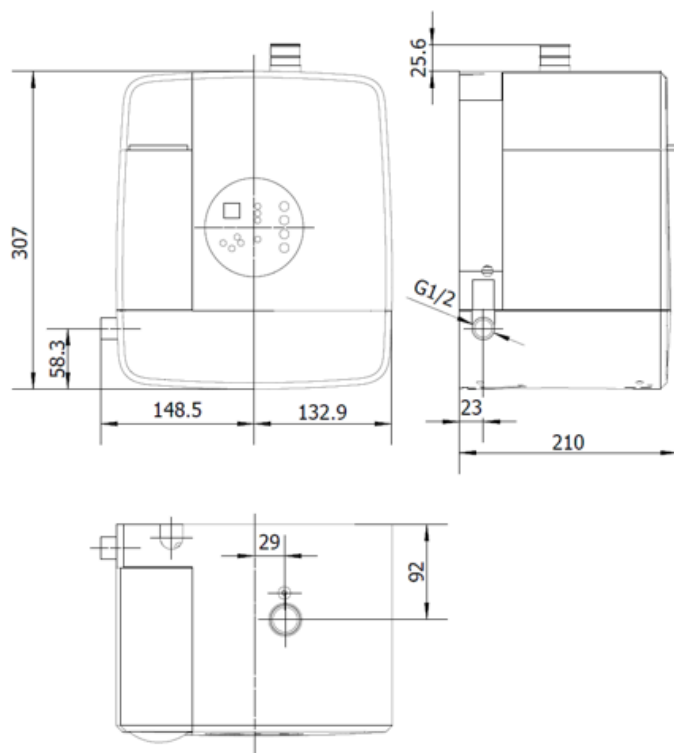
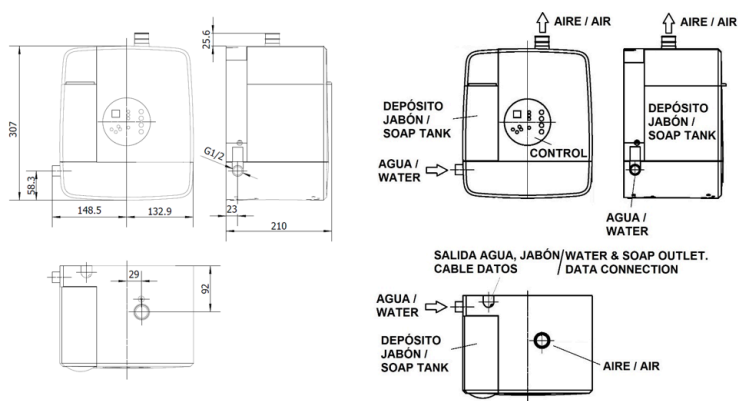
Voltage: 220 V - 240 V~.

Consumption 'stand by': 0,009 A

Electrical insulation: CLASS II

Index of protection against dust and water ingress: IP34

Dimensional drawing





Ctra. Laureà Miró, 385-387
08980 | Sant Feliu de Llobregat,
Barcelona - Spain
T. +34 934 742 423
F. +34 934 743 548
nofer@nofer.com
www.nofer.com



01901.B



01901.GD



01901.N

These specifications may be modified and/or amended due to manufacturing requirements.