



Hinged bar to be fixed to the wall with vertical swivel without roll holder. Length 800 mm. Stainless steel. polished finish

#### Description

- Folding support bar to fix on the wall.
- Suitable for support in washbasins, wc-bidet, showers and bathtubs.
- Designed for toilets adapted for people with reduced mobility.
- Bacteriostatic stainless steel gloss finish.
- Also available in satin finish (NOFER 15051.SP.80.S) and white (NOFER 15051.SP.80.W).

#### Technical characteristics

**Material:** AISI 304 stainless steel

**Finishing:** polished

**Bar diameter:** Ø32 mm

**Bar length:** 800 mm

**Anchor plate dimensions:** 300 x 100 (mm)

**Recommended installation height:** 70-75 cm top bar to floor

#### Suggested text for prescription

NOFER folding support bar made of AISI 304 stainless steel with glossy finish. With brake and anti-conductive kit. Length: 800 mm. Tube bars Ø32 mm.

#### Components

- Stainless steel bar.
- With brake system.
- Also available with roll holder (NOFER 15051.80.B).
- Stainless steel screws included.
- Anticonductive kit included.

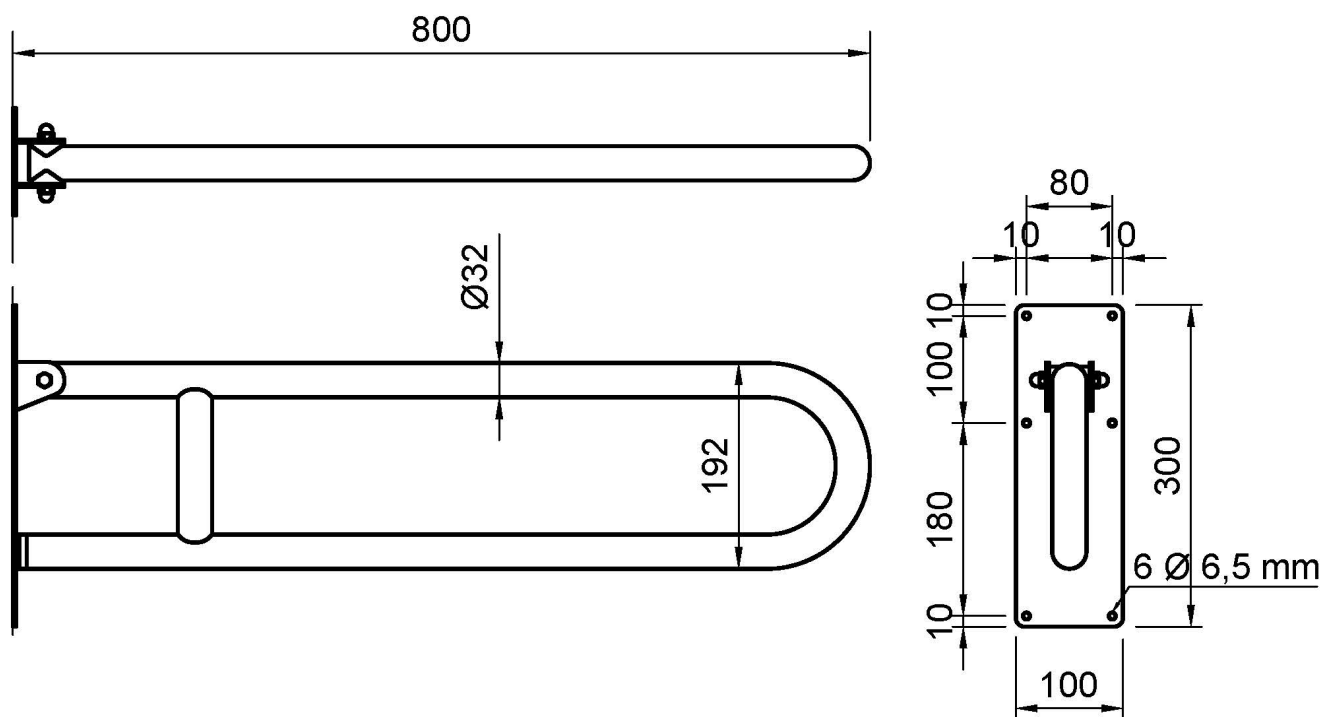
#### Fixing

- Stainless steel wall anchor plate.

#### Maintenance

Stainless steel requires maintenance as dirt over time can damage the chromium (Cr) contained in stainless steel. We recommend a monthly cleaning with a specialized product for stainless steel.

#### Dimensional drawing



Ctra. Laureà Miró, 385-387  
08980 | Sant Feliu de Llobregat,  
Barcelona - Spain  
T. +34 934 742 423  
F. +34 934 743 548  
nofer@nofer.com  
www.nofer.com

RELATED  
PRODUCTS



15051.SP.80.S



15051.SP.80.W

These specifications may be modified and/or amended due to manufacturing requirements.