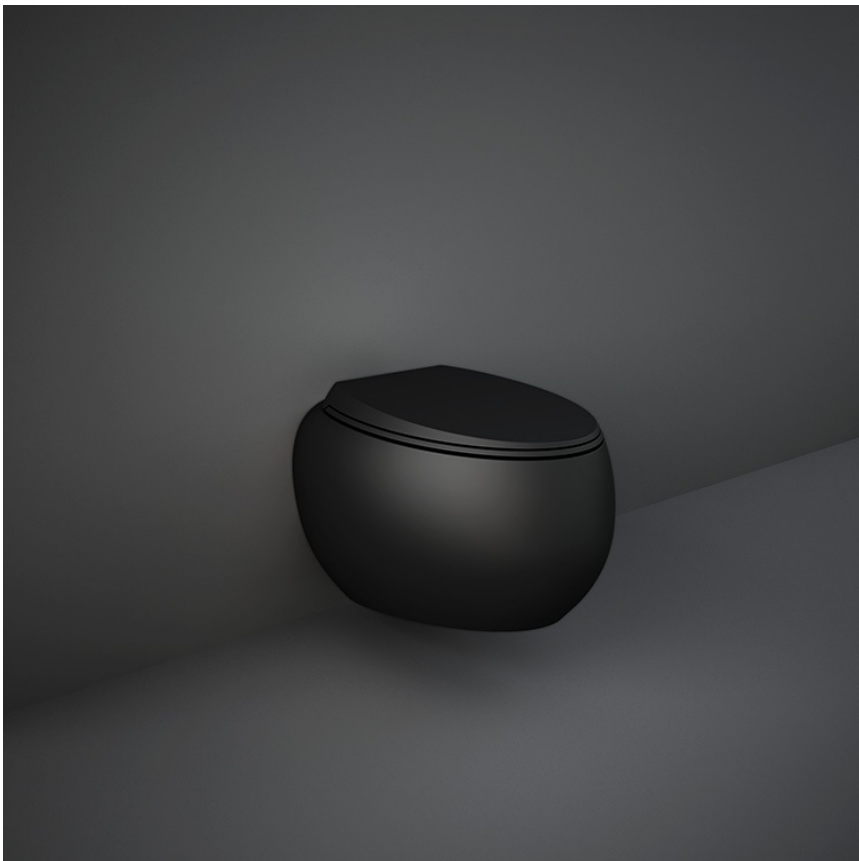


RAK-CLOUD MATT BLACK W/HIDDEN FIXATIONS

Wall Hung | Water Closet

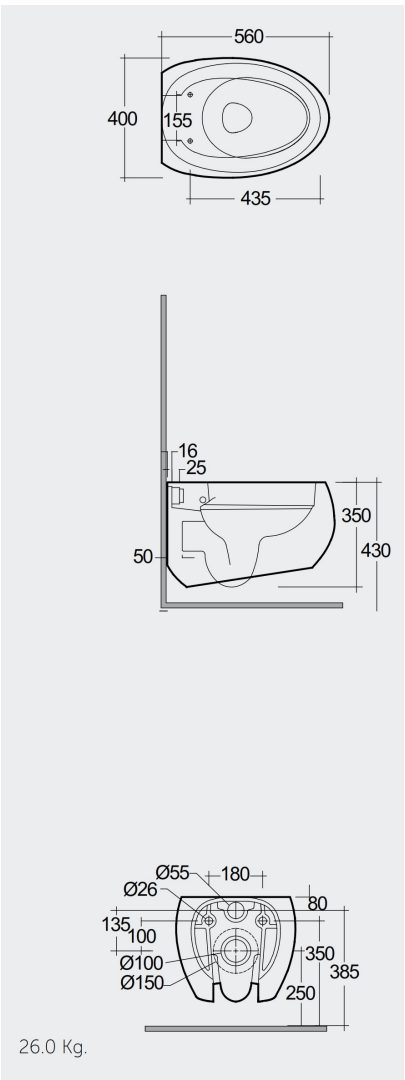
RAK
CERAMICS



TECHNICAL SPECIFICATIONS

Suite:	RAK-CLOUD
Type:	Wall Hung
Dimensions:	560 x 400 mm
Weight:	26 Kg
Color:	MATT BLACK - 504
Trap type:	P Trap
Trapway type:	Concealed
Seat cover options:	ABS & Urea
Bowl shape:	Oval
Soft close:	yes
Flush Type:	Dual Flush

Code	Name
CLOWC1446504A	RAK-CLOUD WATER CLOSET WALL HUNG MATT BLACK PIS-TRAP 56CM WITH HIDDEN FIXATIONS
CLOSC3901504	RAK-CLOUD SOFT CLOSE UREA SEAT COVER (504)



Dimensions: All dimensions in mm. Tolerance of vitreous china & fireclay items: $\pm 5\%$ for below 200mm and $\pm 3\%$ for above 200mm; for all other items tolerance $\pm 1\%$. Note: Due to a continuing development program to improve design and performance, the manufacturer reserves all rights to vary specifications without prior information. Please note accessories are for photographic use only.